

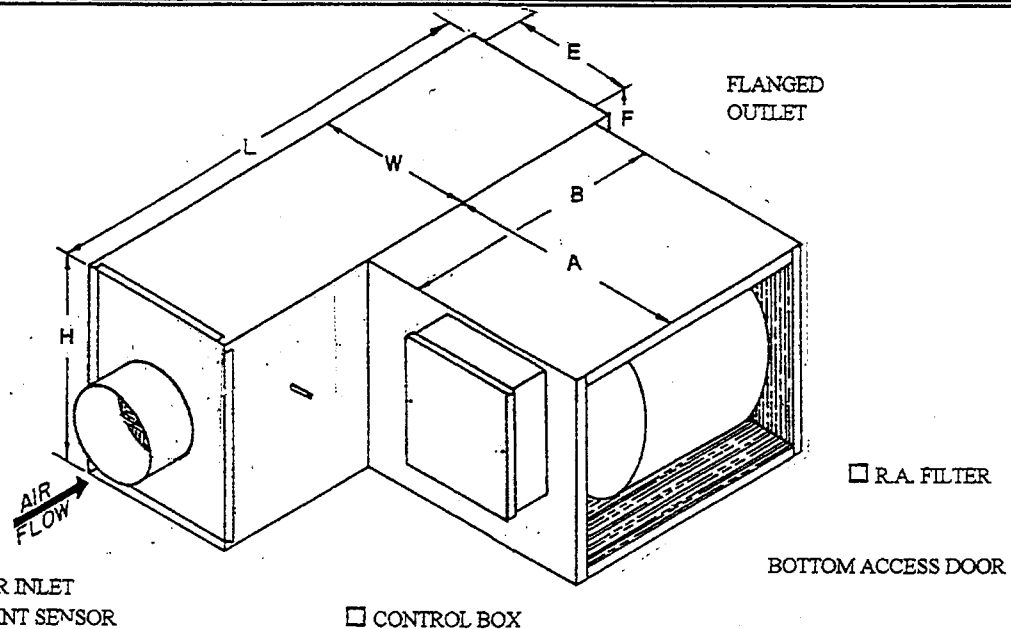


AIR ZONE INDUSTRIES, INC.

Series: **DTVO**

Controls By Others

SUBMITTAL DATA



SPECIFICATIONS

CASING - Minimum 22 gauge galvanized steel reinforced for maximum rigidity and sealed for minimum leakage (less than 2% at 3.0" wg). Units are complete with 1" - 1 1/2# density internal liner in accordance with NFPA-90A (see option below for Hospital Liner).

PRIMARY AIR VALVE - Constructed of a unitized steel frame roll formed for strength and reinforced for rigidity. Heavy gauge steel blades are roll formed for strength and durability. Stainless steel side seals and compression blade edge seals are standard to minimize leakage (less than 2% at 3.0" wg).

MOTOR & BLOWERS - Direct drive, forward curved, multiblade centrifugal blowers are complete with resilient mounted, multi speed, PSC, thermally protected, high efficient motors with shutter at fan discharge.

QTY EA.	MODEL NO.	MAX CFM			DIMENSIONS						
		COOL	HEAT	INLET SIZE	L	W	H	A	B	E	F
	DTV-04	225	200	3.75	32	10	18	23	23	8	16
	DTV-06	550	400	5.75	32	10	18	23	23	8	16
	DTV-08	1000	900	7.75	32	10	18	23	23	8	16
	DTV-10	1525	1200	9.75	32	16	18	23	23	14	16
	DTV-12	2200	1600	11.75	32	16	18	23	23	14	16
	DTV-14	3000	2000	13.75	32	16	18	23	23	14	16
	DTV-16	4000	2200	15.75	32	20	18	23	23	18	16
	DTV-18	5000	2400	17.75	38	20	20	23	28	18	18

Options: Hospital liner Fan Relay 3 Speed switch Outlet volume control
 Draw Thru Design Blow Thru Design H.W. Heat Electric Heat

Controls:

Factory Mount Norm. Open 40 va Transformer Pressure Dependent By factory
 Field mounted Norm. Closed 24 Volt Actuator Pressure Independent By Others

Thermostat: