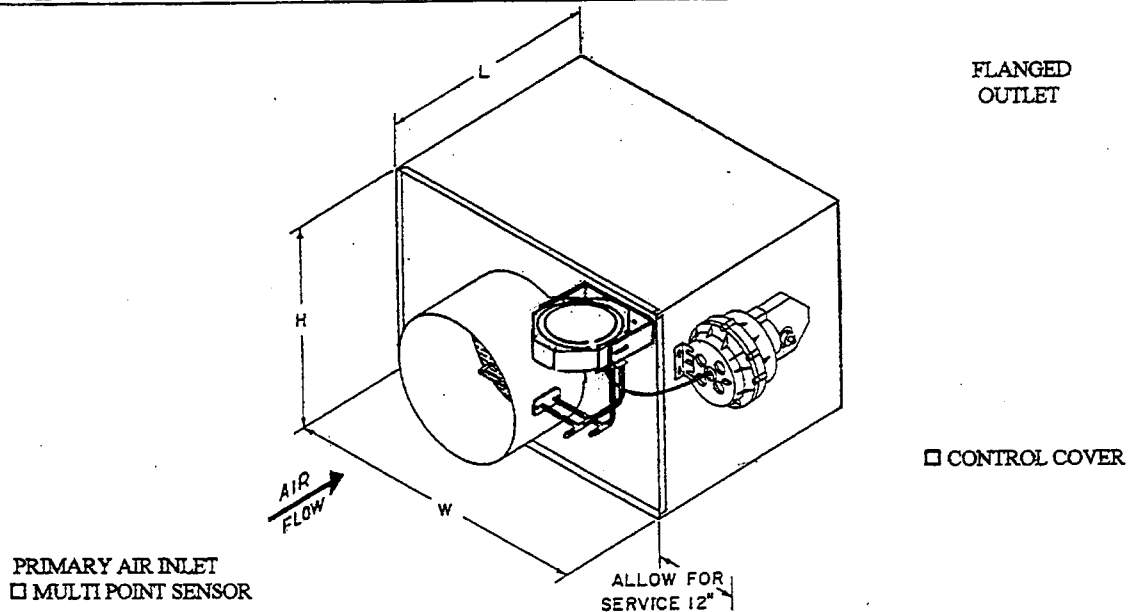




AIR ZONE INDUSTRIES, INC.

Series: **PASM**
Multi-Function Control

SUBMITTAL DATA



SPECIFICATIONS

CASING - Minimum 22 gauge galvanized steel reinforced for maximum rigidity and sealed for minimum leakage (approximately 2% at 3.0" wg). Units are complete with 1" glass fiber internal liner in accordance with NFPA-90A (see option below for hospital liner).

PRIMARY AIR VALVE - Constructed of a unitized steel frame with formed blades that operate opposed or parallel action. Blades pivot on a solid machined shaft and rotate in permanently lubricated bearings. All hardware is zinc plated, side seals are stainless with dual blade edge seals. Leakage is maintained at approximately 2% at 3.0" wg.

QTY	MODEL	CFM	INLET	DIMENSIONS			
				EA.	NO.	MAX	SIZE
—	PASM-04	200	3 3/4		11	12	13
—	PASM-05	400	4 3/4		11	12	13
—	PASM-06	550	5 3/4		11	12	13
—	PASM-08	1000	7 3/4		18	12	13
—	PASM-10	1600	9 3/4		18	12	13
—	PASM-12	2200	12 3/4 x 9 3/4		18	12	13
—	PASM-14	2800	15 3/4 x 9 3/4		31	12	13
—	PASM-16	3500	18 3/4 x 9 3/4		31	12	13
—	PASM-18	5000	18 3/4 x 15 3/4		28	18	22
—	PASM-20	6500	21 3/4 x 15 3/4		34	18	22
—	PASM-24	10000	39 3/4 x 15 3/4		42	18	22

Options: Hospital Liner Hot Water Reheat Electric Reheat Attenuator Section
 Outlet To Match Inlet Rectangular Inlet

Controls:
 Factory Mount Norm. Open Press. Independent
 Field Mounted Norm. Closed

Thermostat:
 By Factory
 By Others