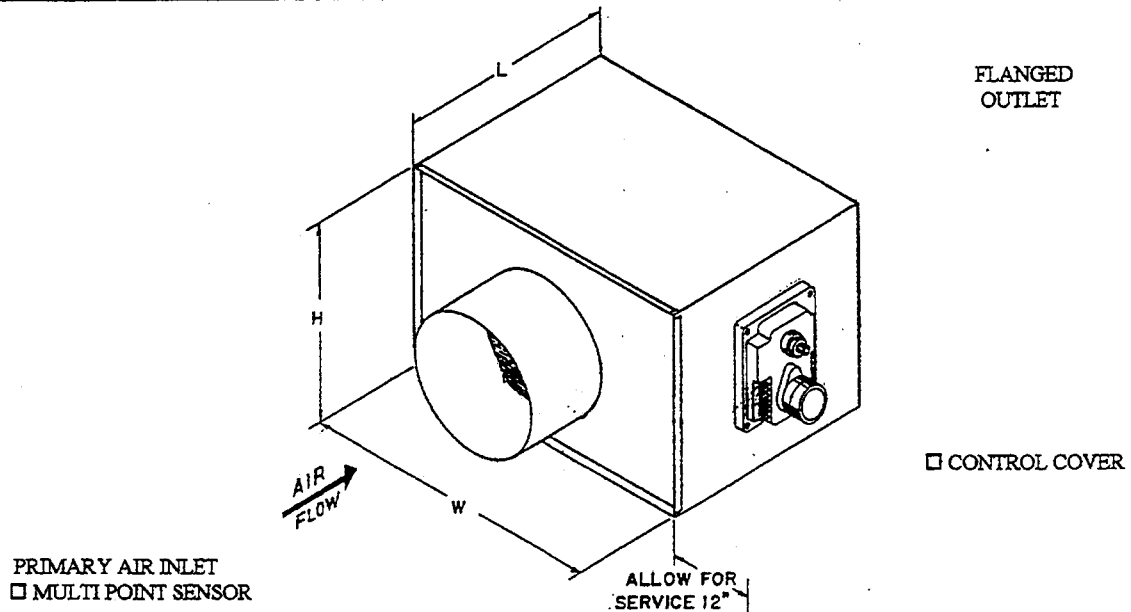




**AIR ZONE INDUSTRIES, INC.**

Series: **PASE**  
Electric Control

## SUBMITTAL DATA



### SPECIFICATIONS

**CASING** - Minimum 22 gauge galvanized steel reinforced for maximum rigidity and sealed for minimum leakage (approximately 2% at 3.0" wg). Units are complete with 1" glass fiber internal liner in accordance with NFPA-90A (see option below for hospital liner).

**PRIMARY AIR VALVE** - Constructed of a unitized steel frame with formed blades that operate opposed or parallel action. Blades pivot on a solid machined shaft and rotate in permanently lubricated bearings. All hardware is zinc plated, side seals are stainless with dual blade edge seals. Leakage is maintained at approximately 2% at 3.0" wg.

| QTY<br>EA. | MODEL<br>NO. | CFM<br>MAX | INLET<br>SIZE   | DIMENSIONS |    |    |
|------------|--------------|------------|-----------------|------------|----|----|
|            |              |            |                 | W          | H  | L  |
| —          | PASE-04      | 200        | 3 3/4           | 11         | 12 | 13 |
| —          | PASE-05      | 400        | 4 3/4           | 11         | 12 | 13 |
| —          | PASE-06      | 550        | 5 3/4           | 11         | 12 | 13 |
| —          | PASE-08      | 1000       | 7 3/4           | 18         | 12 | 13 |
| —          | PASE-10      | 1600       | 9 3/4           | 18         | 12 | 13 |
| —          | PASE-12      | 2200       | 12 3/4 x 9 3/4  | 18         | 12 | 13 |
| —          | PASE-14      | 2800       | 15 3/4 x 9 3/4  | 31         | 12 | 13 |
| —          | PASE-16      | 3500       | 18 3/4 x 9 3/4  | 31         | 12 | 13 |
| —          | PASE-18      | 5000       | 18 3/4 x 15 3/4 | 28         | 18 | 22 |
| —          | PASE-20      | 6500       | 21 3/4 x 15 3/4 | 34         | 18 | 22 |
| —          | PASE-24      | 10000      | 39 3/4 x 15 3/4 | 42         | 18 | 22 |

**Options:**  Hospital Liner  Hot Water Reheat  Electric Reheat  Attenuator Section  
 Outlet To Match Inlet  Rectangular Inlet

**Controls:**

Factory Mount  Norm. Open  40 va Transformer  Press. Dependent  
 Field Mounted  Norm. Closed  24 v Actuator  Aux. End Switch

**Thermostat:**

By Factory  
 By Others