



AIR ZONE INTERNATIONAL

***Series: VDT-CU
Column Air Units***



Quality & Dependable

AMCA Certified Fans

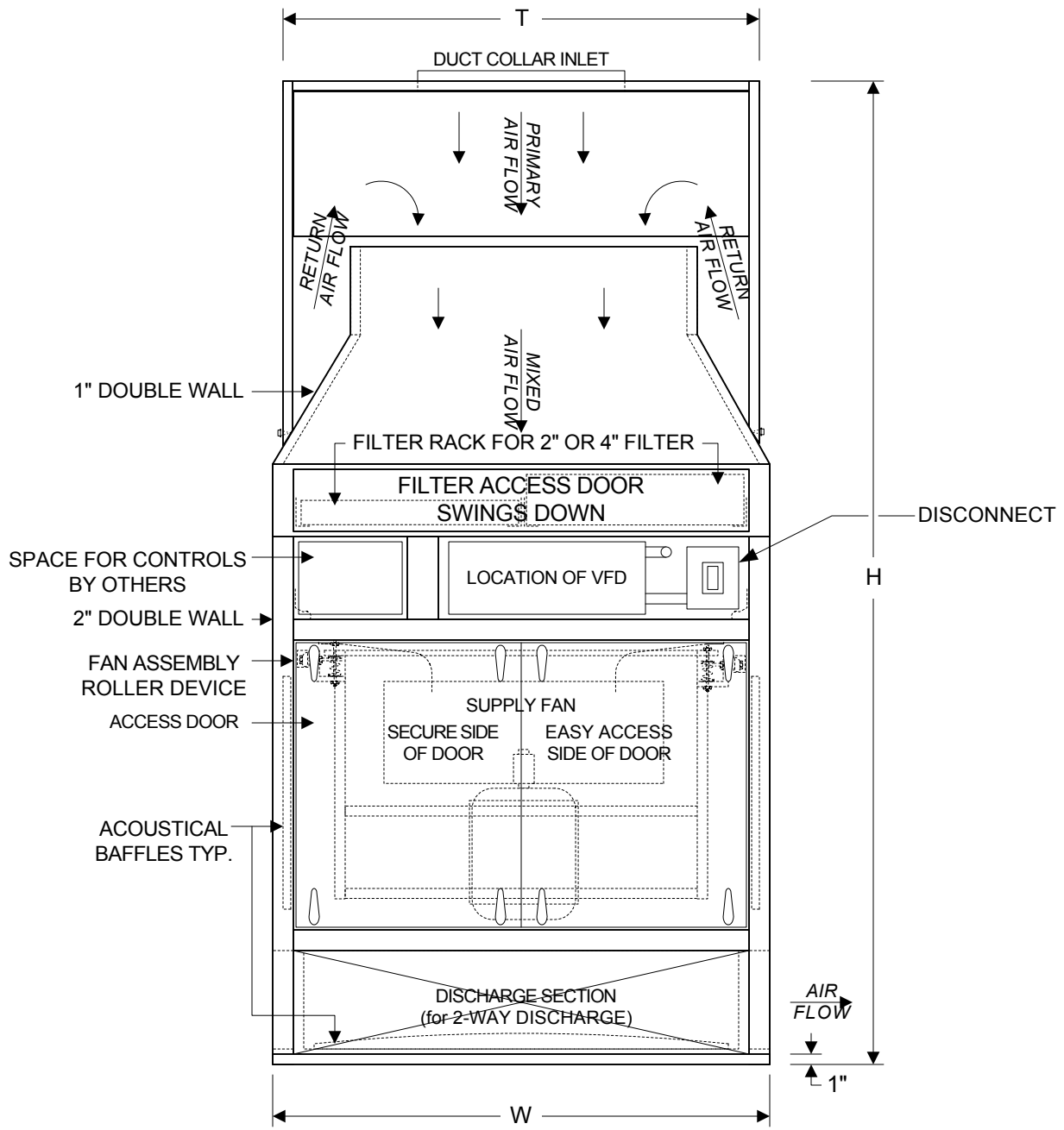
Versatile & Modular

Independent Ratings

ETL CERTIFIED

INDEX

Construction & Design	Page 3
Physical Data	Page 4
Filter Data	Page 4
Dimensions	Page 5
Application Data:	
Fan Performance Data	Page 6
Typical Installation	Page 7
Specifications	Page 8

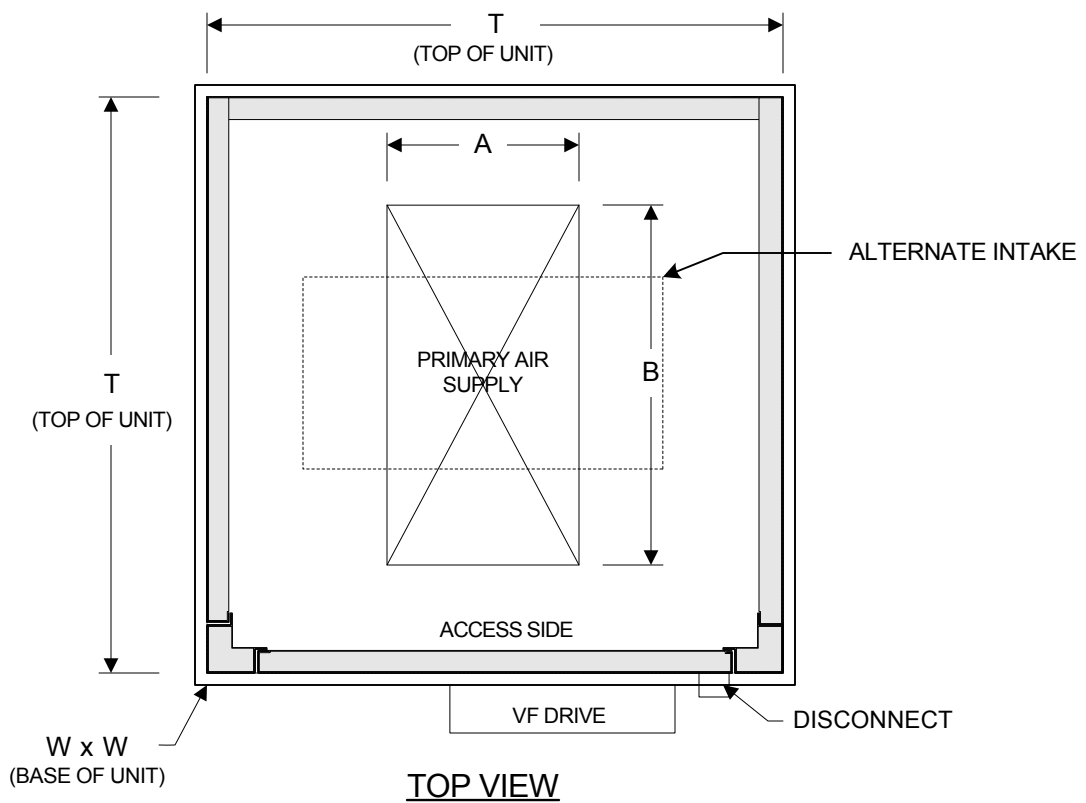
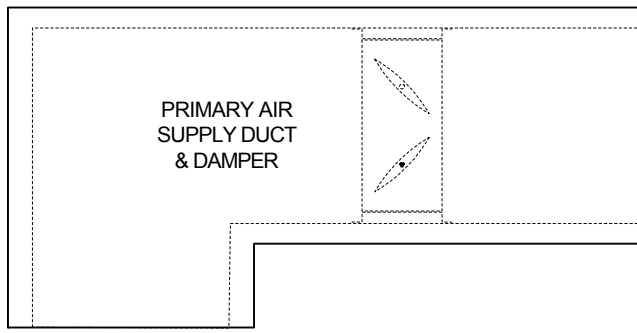


FRONT ELEVATION

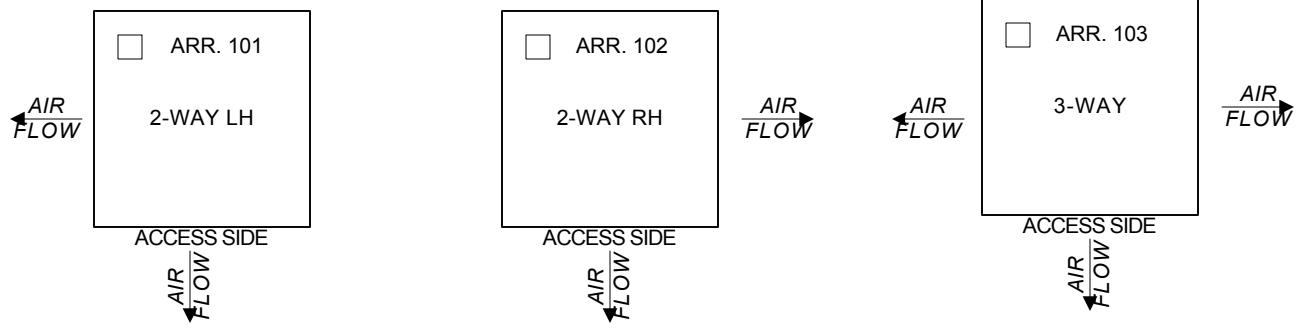
DIMENSIONS

Model	Rated CFM	HP	H*	W	T
VDT-21CU	10,000	3	118"	52"	48"
VDT-17CU	7,000	2	115"	48"	46"
VDT-10CU	5000	2	109"	44"	42"

*Unit Height is maximum.



ARRANGEMENT



PHYSICAL DATA

Model	Rated CFM	HP	Fan	Max Rpm	NC	Weight
VDT-21CU	10,000	3	37"	900	40	2,150#
VDT-17CU	7,000	2	33"	900	40	1,775#
VDT-10CU	5000	2	27"	900	40	1,505#

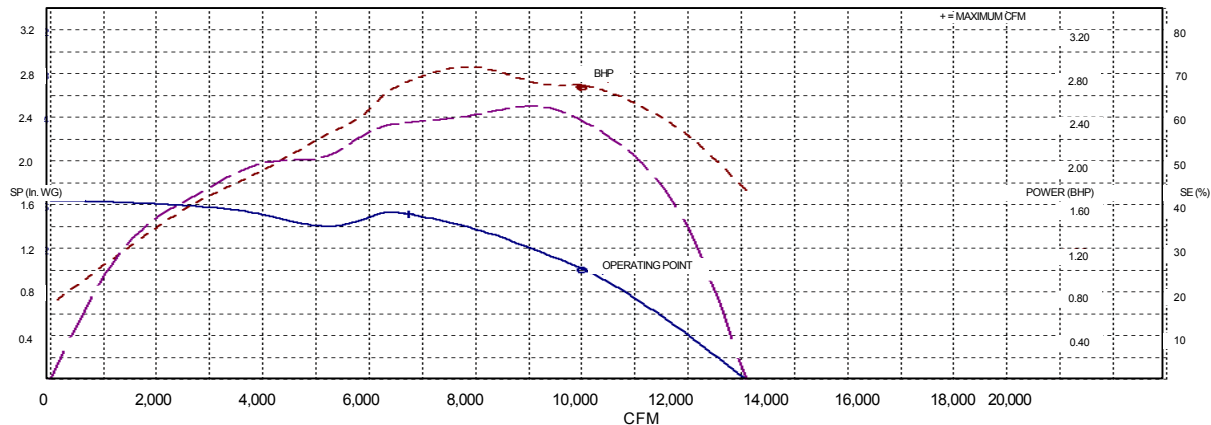
FILTER DATA

Model	Rated CFM	(Qty) Size	Area*	Max. Vel.
VDT-21CU	10,000	(4) 24" x 24"	16.00	625
VDT-17CU	7,000	(4) 20" x 20"	11.11	630
VDT-10CU	5000	(4) 20" x 20"	11.11	450

* Gross Area

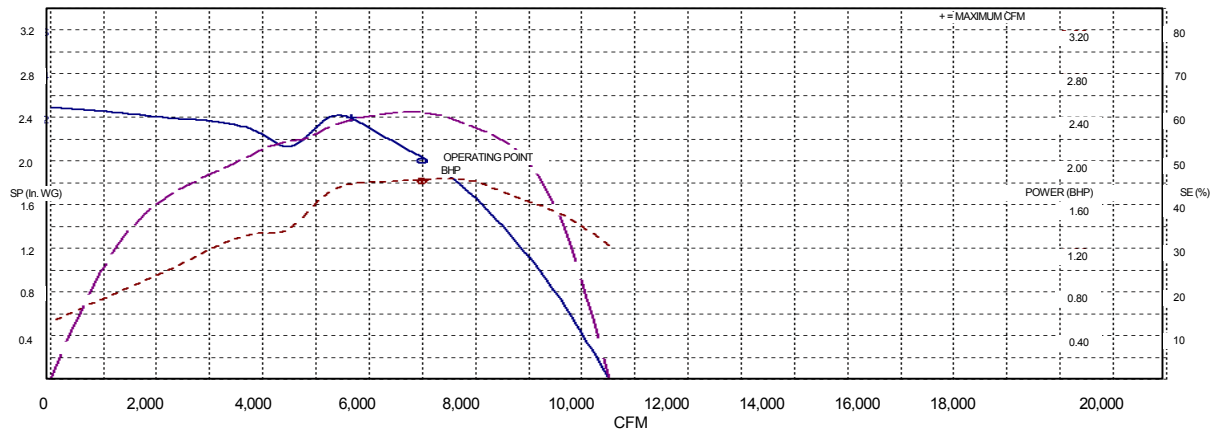
VDT-10CU 37" STAR

10,000 CFM @ 1.00 TSP 2.67 BHP @ 608 RPM



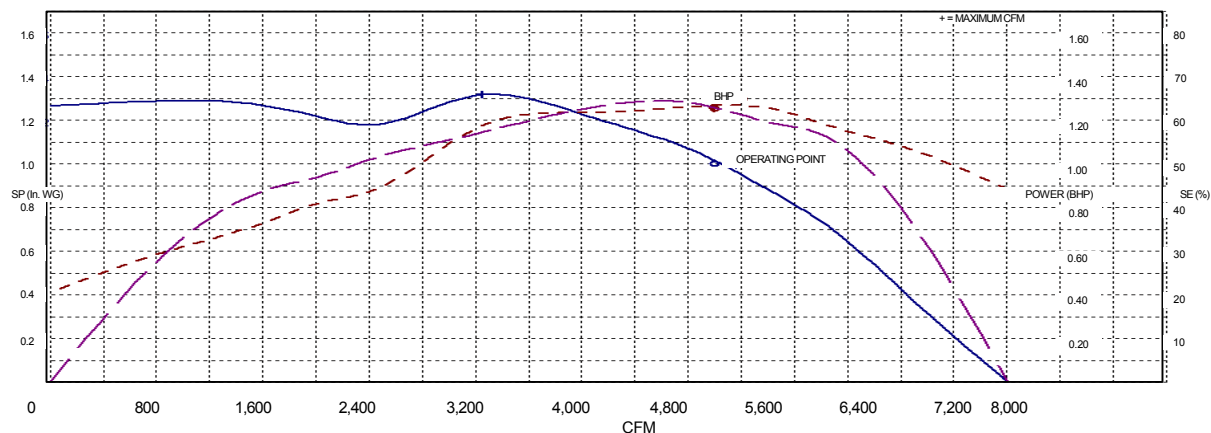
VDT-17CU 33" STAR

7,000 CFM @ 1.00 TSP 1.82 BHP @ 595 RPM

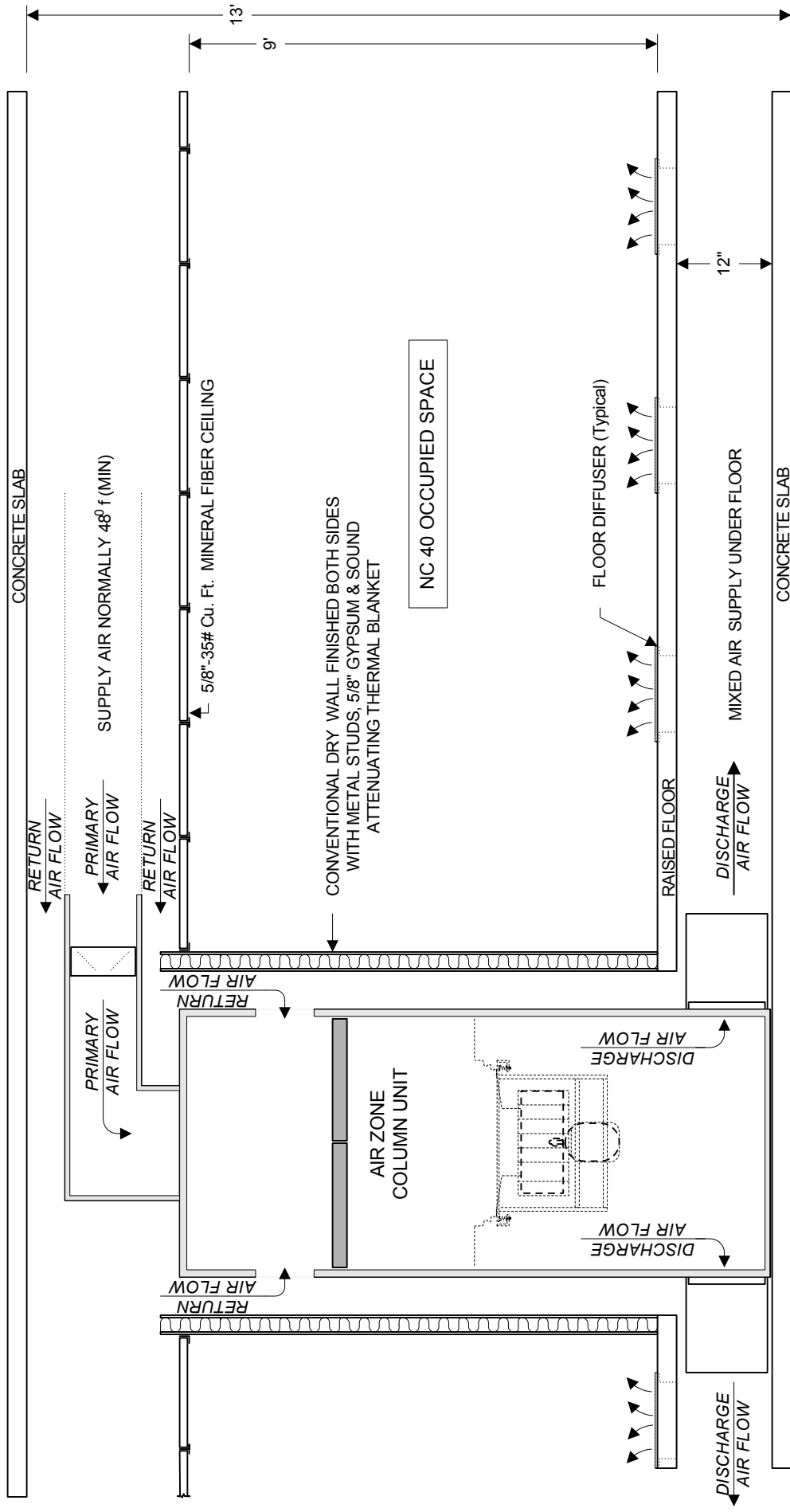


VDT-10CU 27" STAR

5,000 CFM @ 1.00 TSP 1.25 BHP @ 733 RPM



TYPICAL INSTALLATION



SPECIFICATIONS VDI-CU

Unit Floor is constructed of a welded tubular base frame and galvanized steel panels. The exterior panel is (min) 18 gauge solid galvanized G-90 steel and the interior is perforated with dual-density insulation. The floor is reinforced, braced and welded for rigidity to form a unitized assembly. The unit floor is complete with an aerodynamically shaped discharge assembly to properly direct the airflow to the individual openings. This unit is shipped in one piece unless otherwise specified at time of release. The floor is complete with an aerodynamic acoustical pod for sound control.

Unit Casing is constructed of double wall panels fabricated of (min) 18 gauge solid galvanized G-90 steel and the perforated interior sound panels with dual-density insulation, reinforced and supported with galvanized steel angles and channels to form a rugged assembly. A Foil Scrim Kraft (FSK) covering over the insulation in all perforated sound panels protects the air stream from loose insulation fibers. The casing panels are lined with 2# density dual density encapsulated between the inner and outer skin, in full accordance with NFPA 90A and UL 181. The internal liner is secured in place with a suitable UL listed adhesive. Full service access panels are provided on the access side of the unit for easy service. All doors and panels are sealed with a suitable gasket to limit casing leakage.

Access Doors are provided on the front of the unit with Ventlock type latches and EPDM bulb type gaskets. One door is closed and secured with concealed fasteners and one door is latched over the secure door for a quick access. During service the concealed fasteners may be removed to open both access doors.

Fans are direct drive plenum type. All fans are selected for the service intended and are rated according to AMCA. The fan motors are premium efficient and factory mounted, internally. All fans are statically and dynamically balanced after installation on the direct drive fan motor and are designed with the operating speed below the fan first critical speed. The fan and motor assembly are mounted on a welded common tubular steel frame with open spring isolators and a flexible connection at the fan inlet.

Motors are premium efficient open drip proof type. The fan motor is mounted on an adjustable NEMA type base that is designed for motor service and replacement without removing the entire fan assembly.

Filter Sections are provided in a flat arrangement and complete with factory installed 2"-30% pleated filters.

Wiring Components include a factory installed, VF Drive and disconnect switch factory wired in accordance with NEC; the entire assembly is ETL Certified. The field connection is (min) 5-amp single point 480/3/60.

Control Components are not included; all controls are the responsibility of others.

Exterior Finish is standard mill galvanized. All galvanized steel is G 90 with a minimum 1.25 ounces of zing per square foot on both sides and conform to ASTM A525, coating class, lock-forming quality. All welds are cleaned and protected with a minimum 4 mils zing rich paint.

Performance: Energistics Laboratory, div. Cerami & Associates, has conducted independent laboratory test and the unit was certified to provide an NC 40 environment in accordance with the project specifications. Energistics Laboratory Certified Test Results are included herewith.

Optional:

- Primary Inlet Damper Factory installed in the supply air duct shipped loose for field installation by others.

QUALITY AIR HANDLING EQUIPMENT

Compact Air Units

Series: HDT / VDT-FC

Available 600 thru 8,800 CFM
Horizontal or Vertical
Enclosed Cabinet Type
Belt or Direct Drive
Single or Double Wall

Multi-Zone Air Units

Series: HMZ/VMZ

Available 600 through 60,000 CFM
Modular Design up to 12.0" TSP
FC, BI, AF or Plenum Fans
Indoor, Outdoor or Roof Top Design
Single or Double Wall

Custom Air Units

Series: RTAH-CDW

Available 600 through 200,000 CFM
Modular Design up to 8.0" TSP
FC, BI, AF, Plenum or Vane Axial Fans
Indoor, Outdoor or Roof Top Design
Single, Double Wall or Triple Wall

Commercial Roof-Top Units

Series: HDT-RT

Available 600 through 60,000 CFM
Modular Design up to 6.0" TSP
FC, BI, AF, Plenum or Vane Axial Fans
IRoof Ready Roof-Top Units
Single or Double Wall

Partial List of Installations

ABN-AMBRO 30-Story Tower

Chicago, IL

Atlas Refinery

Lake Charles, LA

ARCO Refinery

Long Beach, CA

Atlantic Surgery Center

Atlantic City, NJ

Bernhard College

New York, NY

Bio-Immune Laboratory

Long Island, New York

Bristol Meyers Squibb

Philadelphia, PA

Computer Associates Hdq.

Dallas, Texas

Duke University

Durham, NC

E.I Du Ponte

Orange, Texas

Empire State Building

New York, NY

Enron 33-Story Office Tower

Houston, Texas

FAA LAB & Tech. Center

Atlantic City, NJ

Firestone Rubber

Orange, Texas

Fluor-5-Office Buildings

Houston, Texas

First India Place

New Delhi, India

Ft. Bend 2-Schools

Houston, Texas

General Electric Corp.

Mt. Vernon, IN

Huntsman Industries

Philadelphia, PA

Legacy Bank

Dallas, Texas

Middleton Tobacco Co.

Philadelphia, PA

Mitertek Headquarters

Chicago, IL

Merck & Co. Laboratories

Philadelphia, PA

Methodist Hospital

Houston, Texas

Mobil Refinery

Port Naches, Texas

Moses Industries

Fairfield, NJ

Mulholand School

Los Angeles, CA

Naval Foundry

Philadelphia, PA

N. E. School District

El Paso, Texas

Pennzoil Office Towers

Houston, Texas

Phibro, USA

Deer Park, Texas

QVC Sound Studio

Philadelphia, PA

Randolph AFB

San Antonio, Texas

River Oaks Baptist Sch.

Houston, Texas

SVGL Lithography

Ridgefield, CT

Sunny Farmingdale

Farmingdale, NY

Thomas Jefferson Univ.

Philadelphia, PA

San Antonio ISD

San Antonio, Texas

Sam Houston Univ.

Huntsville, Texas

San Jacinto College

Houston, Texas

Top Flight Corp.

Philadelphia, PA

University of Texas

Galveston, Texas

TSU University

Dallas, Texas

U.S. Navy

Virginia Beach, VA

Univ. of Pennsylvania

Philadelphia, PA

USA Today Hdq.

Mc Lean, VA

VA Hospital

Philadelphia, PA

US Navy

Okinawa, Japan