

SPECIFICATIONS:

Application:

AirFixture® and FlexSys® control devices, in Tate Raised Floors 6" or higher

Size:

9" x 10" outline hole pattern in carpet (Specify top grille color on order)

Under Carpet Grill Rating:

Cast Aluminum, conforms to NFPA 90a, 1250lbs. Load strength

Supply Press/temp:

0.02 to 0.1 inches water gauge / 40 to 140° F

Capacity:

Nominal 95 cfm at 0.05 inches water gauge supply pressure

Noise Criterion:

Below NC-20 at all flow conditions

Carpet Type:

Hole punches can be provided in virtually all commercial grade carpet tile

Catch Basin:

3" Deep Optional

Adjustment Options:

- Constant Volume
- Manually Adjustable
- Automatic Adjustable

Availability:

- Raised Floor Panel available through Tate Dealers
- AirFixture Grille available through JCI Dealers
- Carpet Punching Service provided by Air Zone International

AIR ZONE INTERNATIONAL

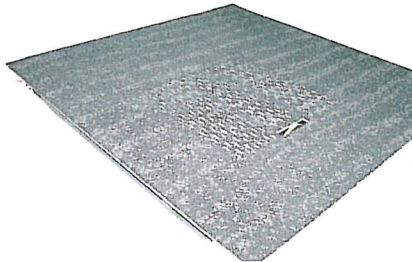
5220 Ted Street
Houston, TX 77040

Phone: 714-460-4040
Fax: 713-460-4050

E-mail:
abergman@airzoneinc.com

THE MAGICK CARPET FLOOR DIFFUSER (Patent Pending)

Presented by Air Zone International



Take a ride on the Magick Carpet...

Like nothing else around—makes the diffuser disappear!

AIR ZONE INTERNATIONAL

DESCRIPTION: Magick Carpet (Integral Carpet Diffuser) is a unique pattern of small oval holes carefully cut into the carpet tile to provide the airflow quantity and pattern required in a raised floor air system. The rugged adjustable floor grille is recessed into the access flooring, concealed beneath the carpet and designed for Constant, Adjustable or Variable Volume use in raised floor air systems. The Magick Carpet Diffuser features a solid cast aluminum floor grill, in a color close to the carpet tone; with an optional galvanized steel dirt catch pan that is powder-coated black. The unit installs in seconds from the top of the floor (CV or VAV). Manually adjustable wheel in grill, also available in various diameters (to accommodate carpet thickness) and colors (Aluminum, black anodized, Brass, etc.), allows the user to limit airflow for individual comfort. The adjustable volume unit is rated at a nominal 90 cfm @ 0.05 in. W.G. with carpet installed. Designed and developed by Air Zone International for application with AirFixture® and Tate Access Floors CC1000 and CC1250 Concrete Filled Panel.

