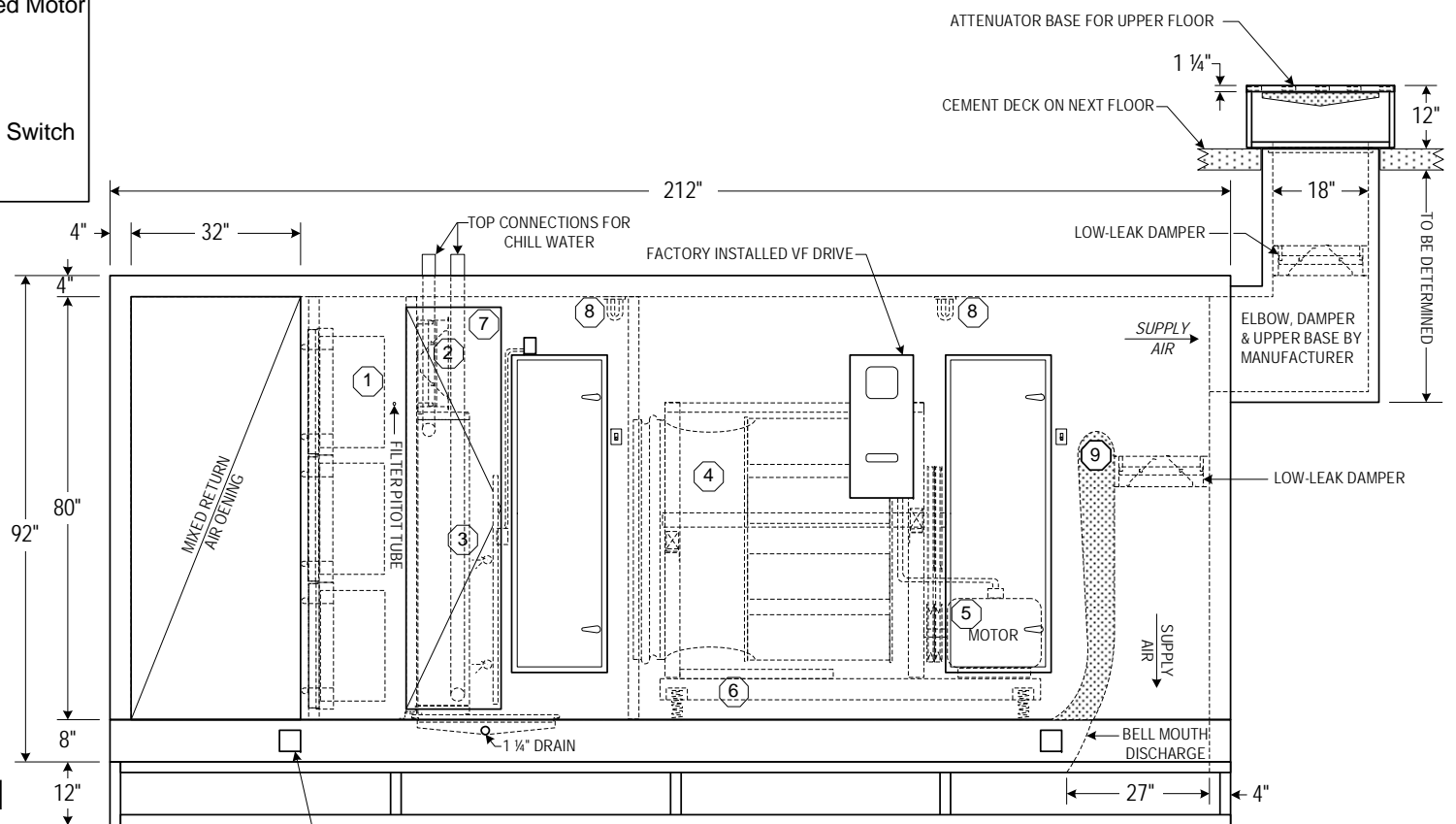


**LEGEND**

- ① 2" MERV 7 & MERV 13 Filters
- ② Low-Leak By-Pass Damper
- ③ ARI Certified CW Cooling Coils
- ④ Quiet Plenum Supply Fan
- ⑤ Premium Efficient UL Listed Motor
- ⑥ Spring Isolation Base
- ⑦ Pipe Chase with Access
- ⑧ Marine Light with External Switch
- ⑨ Discharge Attenuator



**AHI-1-1 & AHU-2-1**

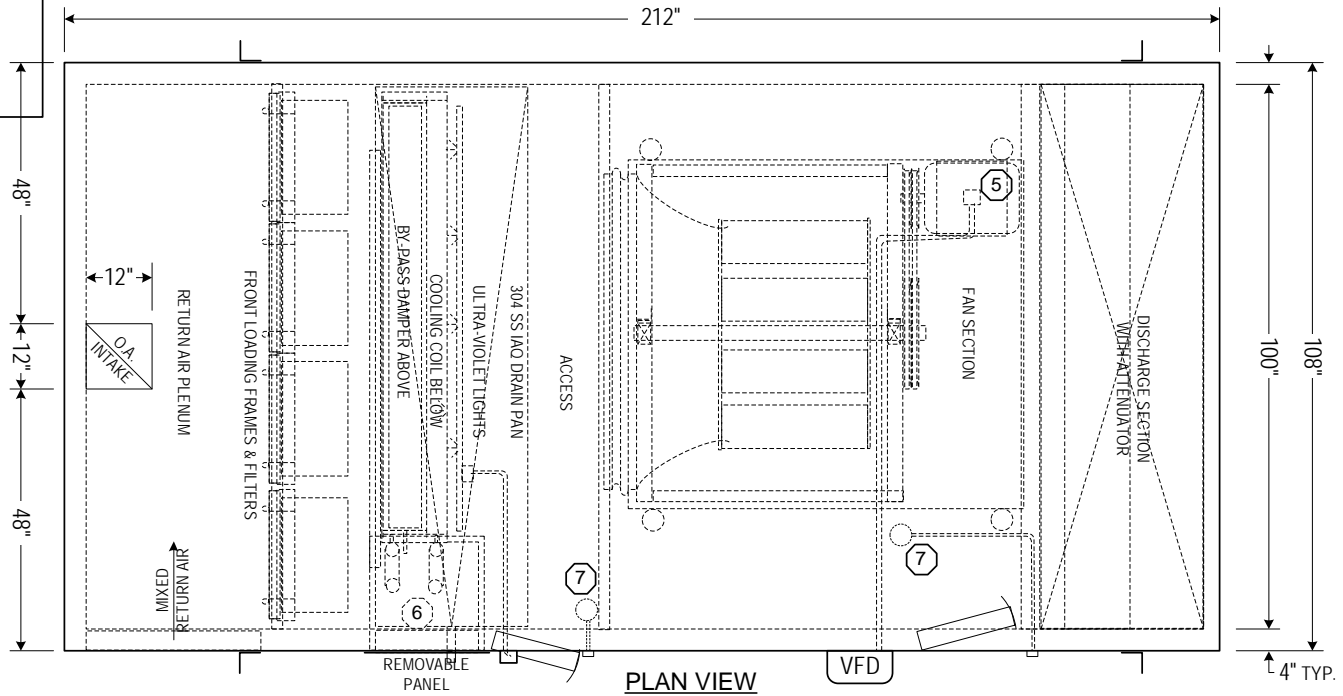
■ RIGHT HAND UNIT AS SHOWN  
 □ LEFT HAND IS OPPOSITE

Est. Dry Weight. = 8,145#

**ELEVATION**

**LEGEND**

- ① 2" MERV 7 & 12" MERV 13 Filters
- ② Low-Leak By-Pass Damper
- ③ ARI Certified CW Cooling Coils
- ④ Quiet Plenum Supply Fan
- ⑤ Premium Efficient UL Listed Motor
- ⑥ Pipe Chase with Access
- ⑦ Marine Type Light with Guard
- ⑧ Spring Isolation Base
- ⑨ Sound Attenuator



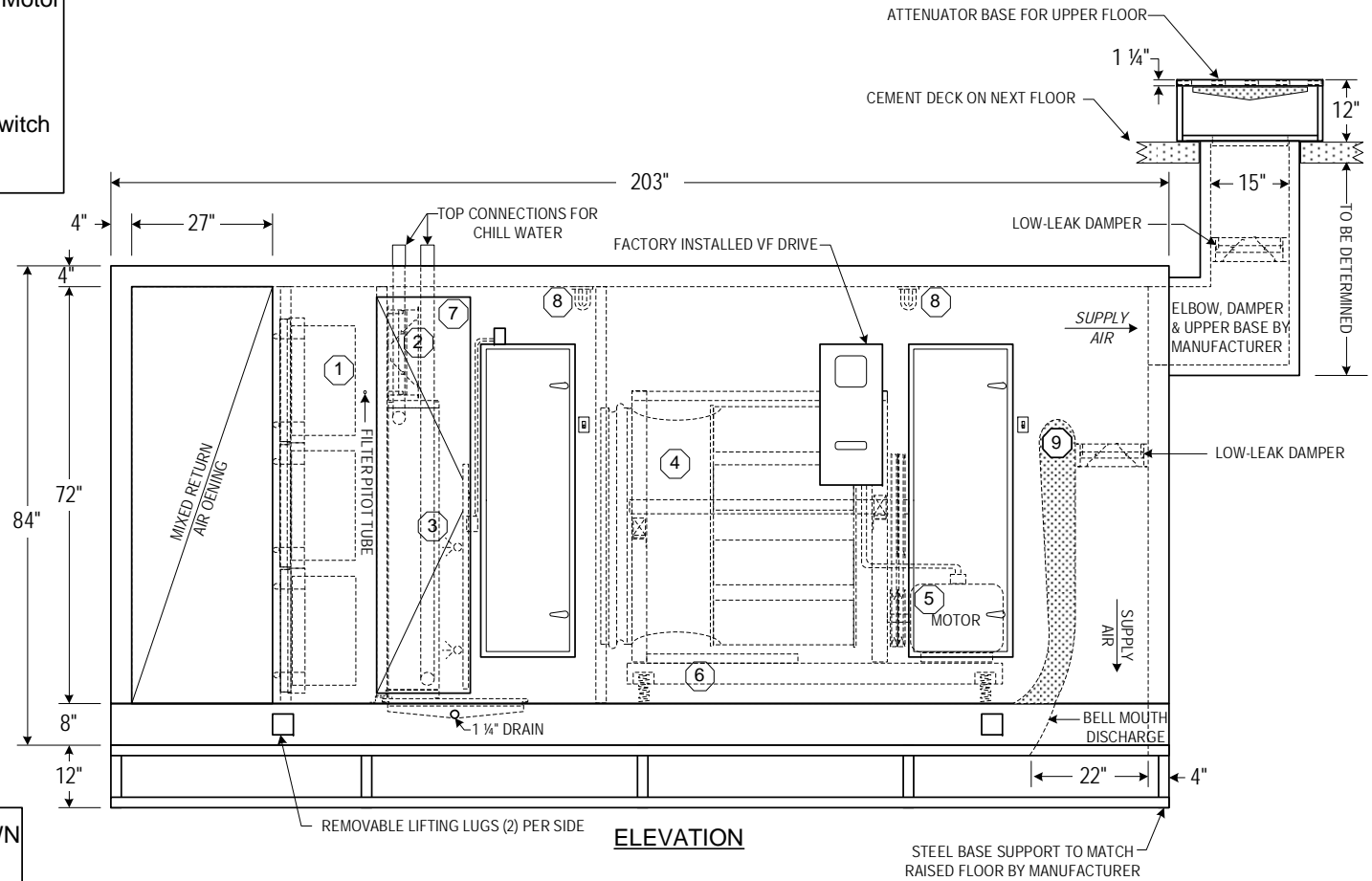
**AHU-1-1 & AHU-2-1**

- RIGHT HAND UNIT AS SHOWN
- LEFTT HAND IS OPPOSITE

Est. Dry Weight. = 8,145#

**LEGEND**

- ① 2" MERV 7 & MERV 13 Filters
- ② Low-Leak By-Pass Damper
- ③ ARI Certified CW Cooling Coils
- ④ Quiet Plenum Supply Fan
- ⑤ Premium Efficient UL Listed Motor
- ⑥ Spring Isolation Base
- ⑦ Pipe Chase with Access
- ⑧ Marine Light with External Switch
- ⑨ Discharge Attenuator



**AHI-1-2 & AHU-2-2**

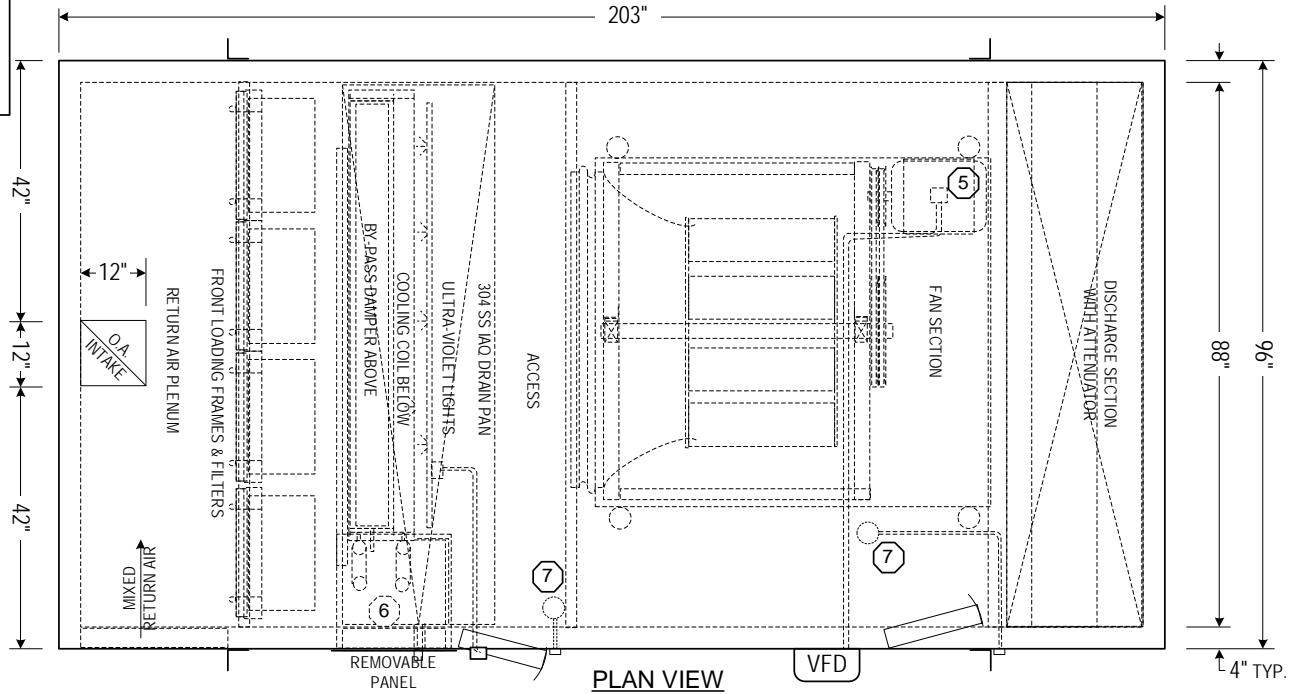
■ RIGHT HAND UNIT AS SHOWN  
 □ LEFT HAND IS OPPOSITE

Est. Dry Weight. = 7,055#

**ELEVATION**

**LEGEND**

- ① 2" MERV 7 & 12" MERV 13 Filters
- ② Low-Leak By-Pass Damper
- ③ ARI Certified CW Cooling Coils
- ④ Quiet Plenum Supply Fan
- ⑤ Premium Efficient UL Listed Motor
- ⑥ Pipe Chase with Access
- ⑦ Marine Type Light with Guard
- ⑧ Spring Isolation Base
- ⑨ Sound Attenuator



**AHU-2-1 & AHU-2-2**

- RIGHT HAND UNIT AS SHOWN
- LEFTT HAND IS OPPOSITE

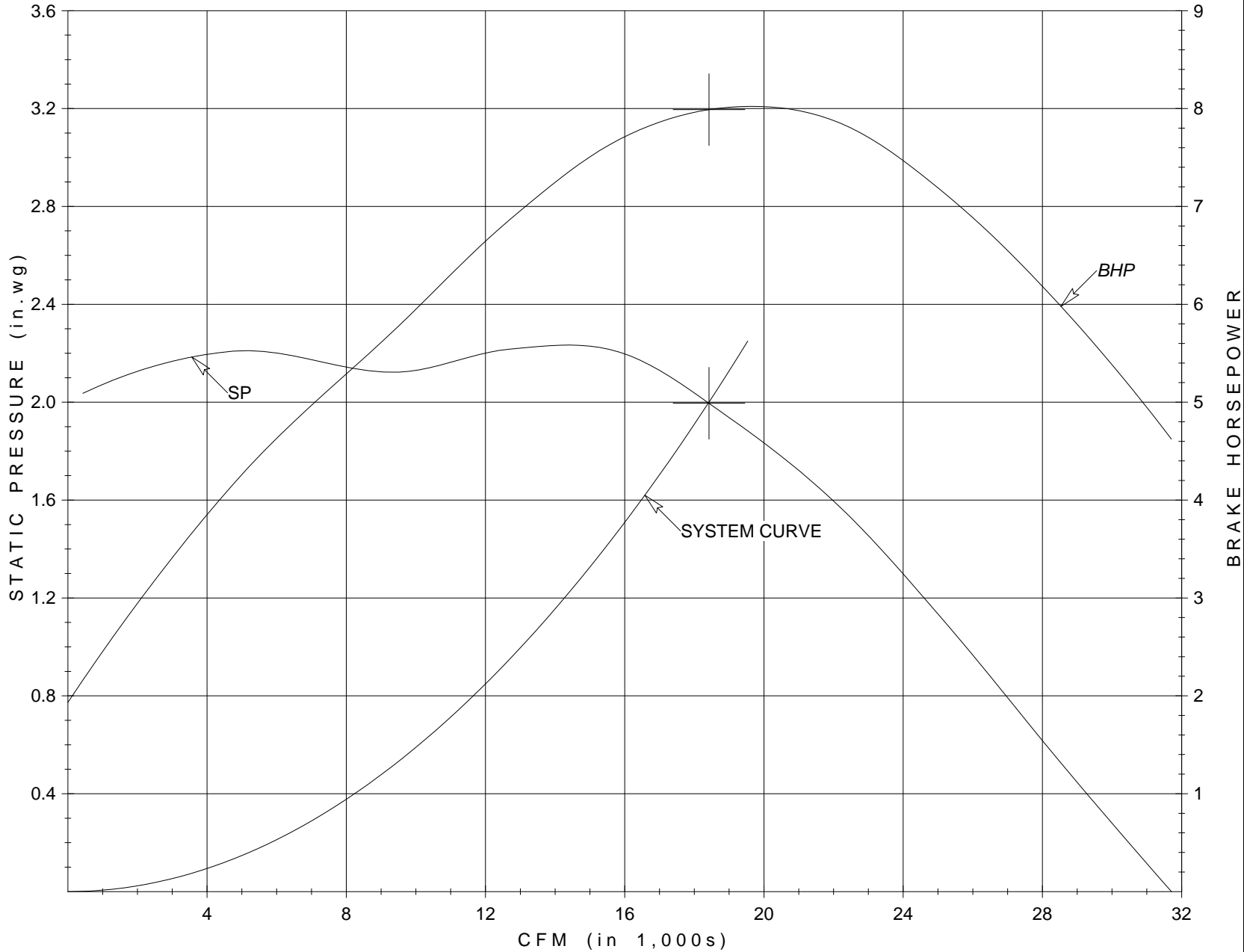
Est. Dry Weight. = 7,055#

Customer: W/A	Fan Tag: AHU-1-1 & 1-2 06/22/08	CFM: _____ 18,420
Job ID: 1050308-0500	Model: 445 EPF	SP: _____ 2 in.wg
Represented By: Air Zone International 713.460.4040		RPM: _____ 591

BHP: _____ 7.99
Outlet Velocity: - N/A
Density: _____ 0.075

79

**TWIN CITY FAN AND BLOWER PERFORMANCE CURVE**



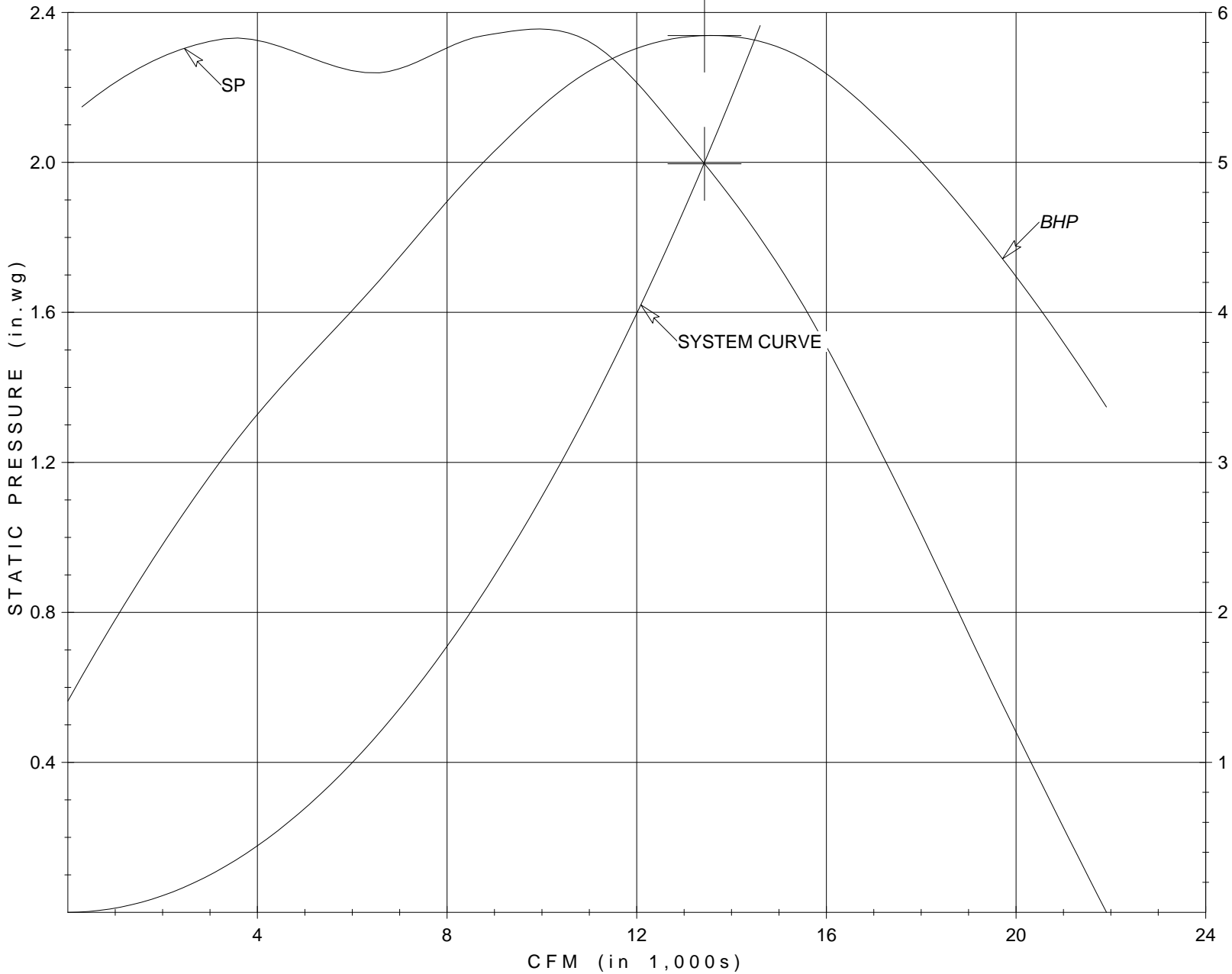
Sound Power Level	
Octave	In/Out
1	87 / 87
2	88 / 85
3	82 / 81
4	73 / 79
5	70 / 79
6	65 / 71
7	58 / 64
8	56 / 59
in db re 10 <sup>-12</sup> watts	

6/24/2008 18:27



Customer: W/A	Fan Tag: AHU-2-1 & 2-2 06-22-08	CFM: _____ 13,430
Job ID: 1050308-0500	Model: 365 EPF	SP: _____ 2 in.wg
Represented By: Air Zone International 713.460.4040		RPM: _____ 740
		BHP: _____ 5.85
		Outlet Velocity: - N/A
		Density: _____ 0.075

**TWIN CITY FAN AND BLOWER PERFORMANCE CURVE**



Sound Power Level	
Octave _____	In/Out
1 _____	86 / 86
2 _____	89 / 86
3 _____	85 / 82
4 _____	74 / 79
5 _____	70 / 77
6 _____	66 / 72
7 _____	59 / 65
8 _____	56 / 60
in db re 10 <sup>-12</sup> watts	
6/24/2008 18:30	



JOB INFORMATION	
Job Name:	911 Center
Job Number:	1050308-0500
Location:	Houston, Texas
Altitude (ft.):	
Customer:	Johnson / York - Houston
Engineer:	Oscar Pazara
Revision:	0
Date:	5/8/2008

TAG INFORMATION	
Coil Tag:	AHU-1-1 & ahu-2-1

USER INFORMATION	
Prepared By:	Carl Duke
Company:	Air Zone International
Phone:	(713) 460-4040
Fax:	(713) 460-4050
email:	cduke@airzoneinc.com

COIL PERFORMANCE	
Airflow (scfm)	13,450
Face Velocity (ft./min.)	427
Total Capacity (Btu/hr)	405,683
Sensible Capacity (Btu/hr)	357,232
Sensible Heat Ratio	0.881
Entering Air DB / WB (°F)	78.3 / 63.2
Leaving Air DB / WB (°F)	54.0 / 52.8
Air Pressure Drop (in. WC)	0.39
Fluid Type / Percent	Water / 100%
Entering / Leaving Fluid Temp (°F)	42.0 / 60.0
Fluid Flow Rate (gpm)	44.8
Fluid Pressure Drop (ft. WC)	7.8
Fluid Velocity (ft./sec.)	2.7

A) ARI Certified And Rated In Accordance With ARI 410.  
 L) Coil rating valid for Air Zone coils only.

COIL CONSTRUCTION	
Coil Model Number	5WH0806B
Fin Height (in.)	54
Fin Length (in.)	84
Coil Quantity	1
Face Area (sq.ft.)	31.5
Rows	6
Tube Diameter (in.)	5/8
Tube Material (in.)	0.020 Copper
Fins per inch	8
Fin Material (in.)	0.0075 Aluminum
Fin Surface	Ripple
Casing Material	Stainless Steel
Circuiting	Half Serpentine
Connection Hand	Right
Connection Size (in.)	2
Connection Type	MPT
Header Vent/Drain Type	.50 FPT on End Cap
Coil Dry Weight (lbs)	512
Phenolic Coating (Y or N)	No
Casing Mounting Holes (Y or N)	No
Turbo Spirals (Y or N)	No
Intermediate Header Drains (Y or N)	No



JOB INFORMATION	
Job Name:	911 Center
Job Number:	1050308-0500
Location:	Houston, Texas
Altitude (ft.):	
Customer:	Johnson / York - Houston
Engineer:	Oscar Pazara
Revision:	0
Date:	5/8/2008

TAG INFORMATION	
Coil Tag:	AHU-2-1 & AHU-2-2

USER INFORMATION	
Prepared By:	Carl Duke
Company:	Air Zone International
Phone:	(713) 460-4040
Fax:	(713) 460-4050
email:	cduke@airzoneinc.com

COIL PERFORMANCE	
Airflow (scfm)	9,970
Face Velocity (ft./min.)	443
Total Capacity (Btu/hr)	304,942
Sensible Capacity (Btu/hr)	272,158
Sensible Heat Ratio	0.892
Entering Air DB / WB (°F)	79.3 / 63.5
Leaving Air DB / WB (°F)	54.3 / 53.0
Air Pressure Drop (in. WC)	0.41
Fluid Type / Percent	Water / 100%
Entering / Leaving Fluid Temp (°F)	42.0 / 59.9
Fluid Flow Rate (gpm)	33.9
Fluid Pressure Drop (ft. WC)	5.7
Fluid Velocity (ft./sec.)	2.5

A) ARI Certified And Rated In Accordance With ARI 410.  
 L) Coil rating valid for Air Zone coils only.

COIL CONSTRUCTION	
Coil Model Number	5WH0806B
Fin Height (in.)	45
Fin Length (in.)	72
Coil Quantity	1
Face Area (sq.ft.)	22.5
Rows	6
Tube Diameter (in.)	5/8
Tube Material (in.)	0.020 Copper
Fins per inch	8
Fin Material (in.)	0.0075 Aluminum
Fin Surface	Ripple
Casing Material	Stainless Steel
Circuiting	Half Serpentine
Connection Hand	Right
Connection Size (in.)	2
Connection Type	MPT
Header Vent/Drain Type	.50 FPT on End Cap
Coil Dry Weight (lbs)	378
Phenolic Coating (Y or N)	No
Casing Mounting Holes (Y or N)	No
Turbo Spirals (Y or N)	No
Intermediate Header Drains (Y or N)	No